

From our Executive Director

I began my new role at Cornerstone as Executive Director in July 2015. It has been an exciting, and rewarding opportunity. It is an honour to work for such a dynamic organization and I am grateful for the exceptional level of commitment to Cornerstone that is evident at all levels of the organization. We have a strong and competent Board of Directors that maintains an effective governance structure. The Board provides a skilled level of oversight which furthers the mission and vision of Cornerstone. The Board's focused approach contributes significantly to the high level of excellence which we strive for at Cornerstone and helps to set this standard for the entire organization.

We are committed to being a centre of excellence in the field of family violence. This requires investing in staff development, seeking new opportunities to enhance programs, building and maintaining effective community partnerships and developing and achieving our strategic priorities. This past year, we have continued to move forward in all of these areas.

The day to day work continues to be challenging and demand for services remains high. Our staff witness the struggles women go through as they try to rebuild their lives and face a scarcity of resources such as: inadequate financial support, lack of affordable housing, limited affordable childcare options, challenges with accessing legal support and limited employment opportunities that pays a living wage. Our staff work with women and children who have been impacted and often traumatized by family violence. Their needs are great and the issues complex. It can seem like an uphill struggle yet our staff are commended for their perseverance, skill and commitment to help women and children awaken with renewed hope.

When a woman finds safety at our shelter after years of violence or gains access to safe long term housing or a woman living in a rural area has access to a counsellor, or a child learns to understand what a healthy relationship is, it's because of you, our supporters, our donors, funders and service partners. Thank you for helping make a difference this year.

Cornerstone is a place where hope grows. We welcome everyone to continue helping us lay strong roots for hope to grow for women and children impacted by family violence in Northumberland County.

Nancy Johnston,
Executive Director

From our Board

Cornerstone: Where Hope Grows.

We were proud this past year to highlight the work we do in this short but memorable phrase, and to promote this on our new website, where you can see how the centre is breaking the cycle of family violence by providing immediate shelter, counselling and prevention services.

Yet, as in past years, demand for Cornerstone services greatly outstrips supply and we are forced to turn women and children away due to funding constraints. In the coming year we will continue to rely on the fundraising initiatives that have been so successful for us in 2015-16 and on the generous donations from the donors, volunteers and supporters across our community.

Thanks to the support we receive and to the dedication and hard work of the staff, our clients have discreet in-person and online access to our services and resources and the prevention program continues to receive very positive reviews in our local schools.

The successes this past year have only been possible because of the on-going commitment of the Cornerstone staff. Their hard work, and professionalism is unparalleled.

I would like to acknowledge all the staff and volunteers at Cornerstone as well as our Board of Directors, community partners and our donors. Thank you for another successful year. We are privileged to live and work in such a supportive and strong community. Together, we can help end family violence and be the place where hope grows.

Samantha Liscio,
Board Chair (Acting)

The impact in the words of our clients

“All can say is I’m so thankful for the support given to me and my family all these 8 months. And after I find a job I would like to help here because what you do for women is wonderful.”

“The only thing that I can say for all of you is thank you so much. I wouldn’t be able to do anything without your support. When I first came here I felt so guilty and stupid and after that now I feel stronger than ever”

“These services have been a valuable resource in helping me get through a difficult process and situation. Could not imagine doing it without all of the incredible help I received/am still receiving!”

“I felt good being here. I obtained a job and was starting to get on my feet”

“It’s the best place to feel safe, all the staff are so kind and professional”

newborn-70 ages of clients served

2 visits from Santa Claus

4 boxes of diapers for the little ones per week

10 community events were held

12 schools enrolled in Youth Violence Prevention Program

24 families placed in affordable housing

30 fun outings for children and youth

32 litres of milk drank per week

33 volunteers gave their time

42 Classrooms received violence prevention programming

42 children lived in shelter

50 people received family court support

62 women lived in shelter

134% Occupancy rate average all year

168 text/email conversations giving counseling services

204 women not needing shelter were given counseling

471 people/organizations donated financially

602 visits were made to our resource centre

662 donations of clothing, food, household items were made

728 children and youth served in the community

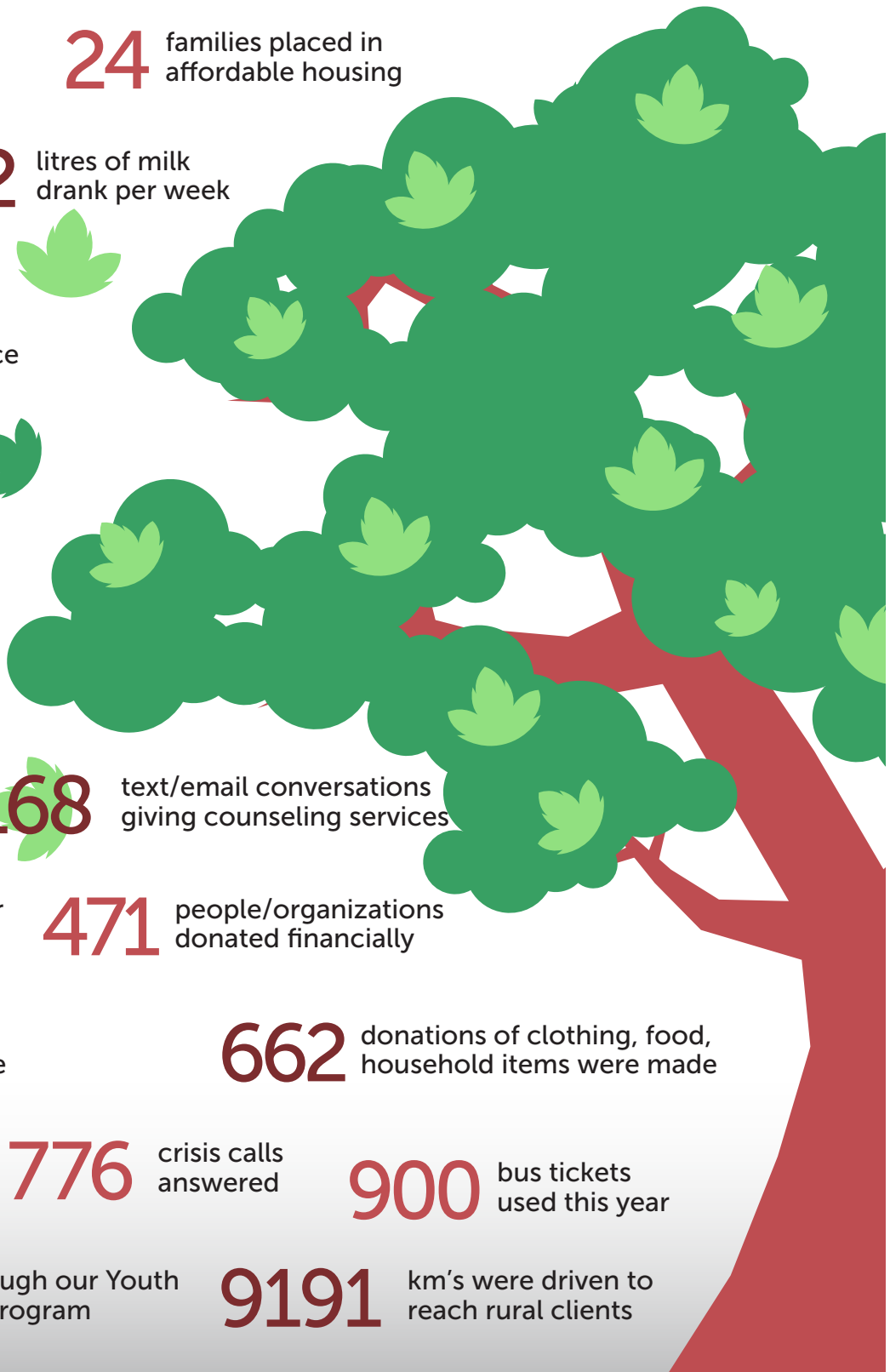
776 crisis calls answered

900 bus tickets used this year

1179 students reached through our Youth Violence Prevention Program

9191 km's were driven to reach rural clients

IMPACT REPORT



Summary of Income & Expenses

For the Year Ended
March 31, 2016

Provincial Funding	\$ 1,022,264
United Way Funding	\$ 70,281
Fundraising and Donations	\$ 207,667
Grants	\$ 103,105
Other Revenue	\$ 500
Interest Income	\$ 3,646
Total Revenue	\$ 1,407,463
Salaries & Benefits	\$ 1,132,296
Transportation	\$ 17,918
Communication	\$ 12,287
Rent/Utilities/Insurance	\$ 39,339
Training & Recruitment	\$ 5,943
Advertising	\$ 5,033
Repairs & Maintenance	\$ 41,663
Supplies (Program & Admin)	\$ 51,875
Professional Services	\$ 8,275
Purchased Services	\$ 52,256
Gift in kind	\$ 7,105
Donation/Fundraising Expenses	\$ 21,167
Total Expenses	\$ 1,395,157
Reserves	
Board Fund Reserve	\$ 180,151
Restricted Fund Reserve	\$ 124,528
Total Reserve	\$ 304,679

*Cornerstone would like to thank
each individual and organization
that has helped us in 2015/2016!*

Board of Directors

Elaine Cortesis-Yates, Chair (mat. leave)
Property Management

Samantha Liscio, Acting Chair
Corporate Strategist

Gerard Bondy, Secretary/Treasurer
Accountant/Financial Advisor

Dindin Villarino, Acting Vice-Chair
Immigration Portal Coordinator

Michelle Tabor
Advertising/Marketing

Susan Rowland
Lawyer

Peter Csefko
Retired OPP

Peter Dounoukos
Media Sales

Kai Liu
Police Chief

Nicole Gibson
Teacher

Darryl Goodall
Management Consultant/Accountant

Stefanie Rudd
Lawyer

Makayla Nowee
Youth Representative

Management Team

Nancy Johnston,
Executive Director

Jane Lang,
Manager of Community Services

Emily Tilsworth,
Manager of Residential Services

Janelle Eisler,
Manager of Resource Development